

edilportale[®] TOUR 2015

La Mostra Convegno in 20 tappe su
Architettura sostenibile, Efficienza
energetica, Comfort abitativo, Active
House, Costruzioni in legno, Antisismica,
Antincendio, Tecnologie costruttive.

IN COLLABORAZIONE CON



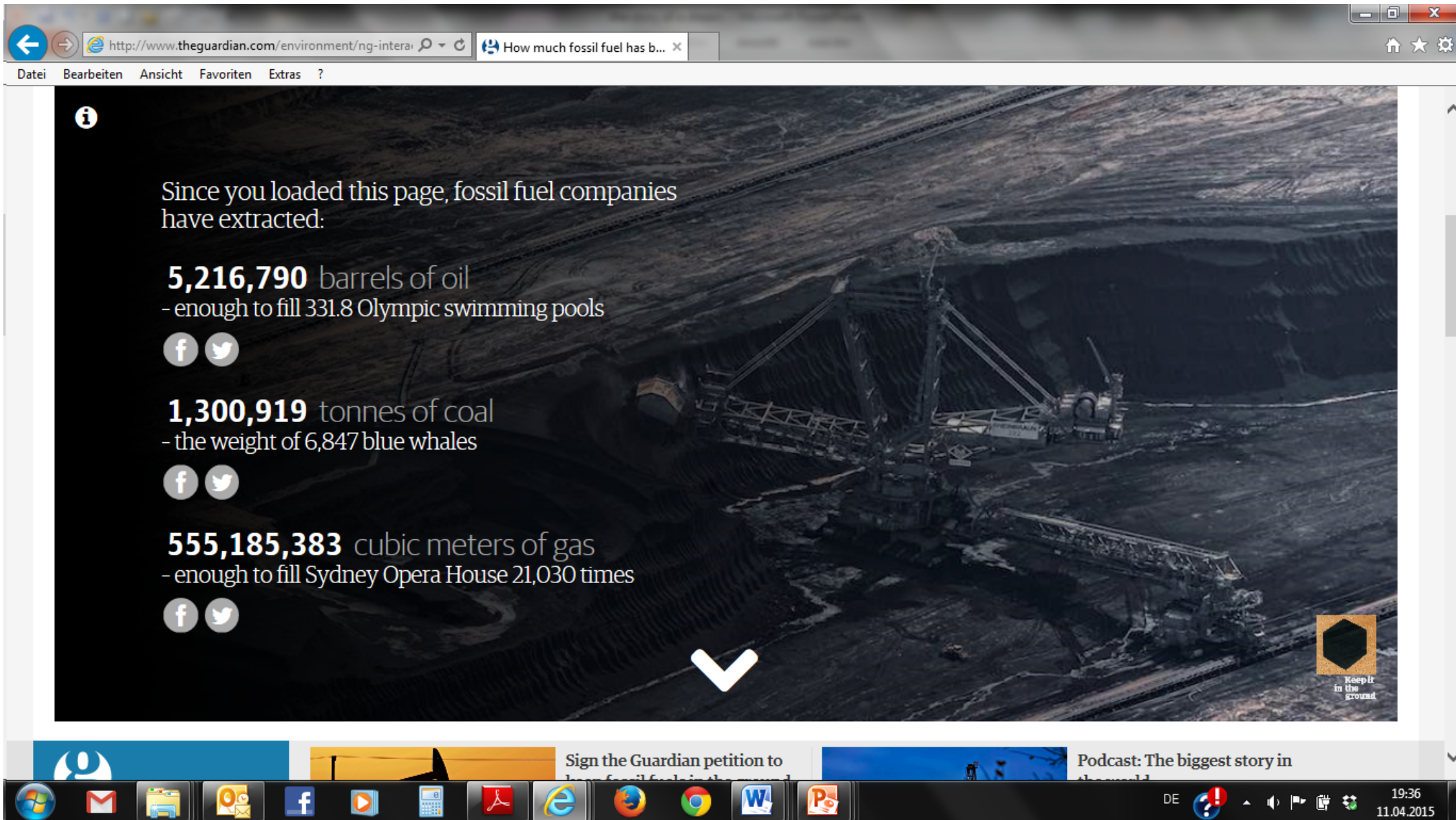
Rimini, 14 aprile 2015

Le nostre città sono il Petroleum Nostrum Deep renovation building

Norbert Lantschner, Presidente della Fondazione



...perché non sanno quello che fanno



The screenshot shows a web browser window displaying an article from The Guardian. The background image is an aerial view of a large-scale open-pit coal mine with heavy machinery. The article text is overlaid on the left side of the image. At the bottom right of the article area is a logo for 'Keep it in the ground'.

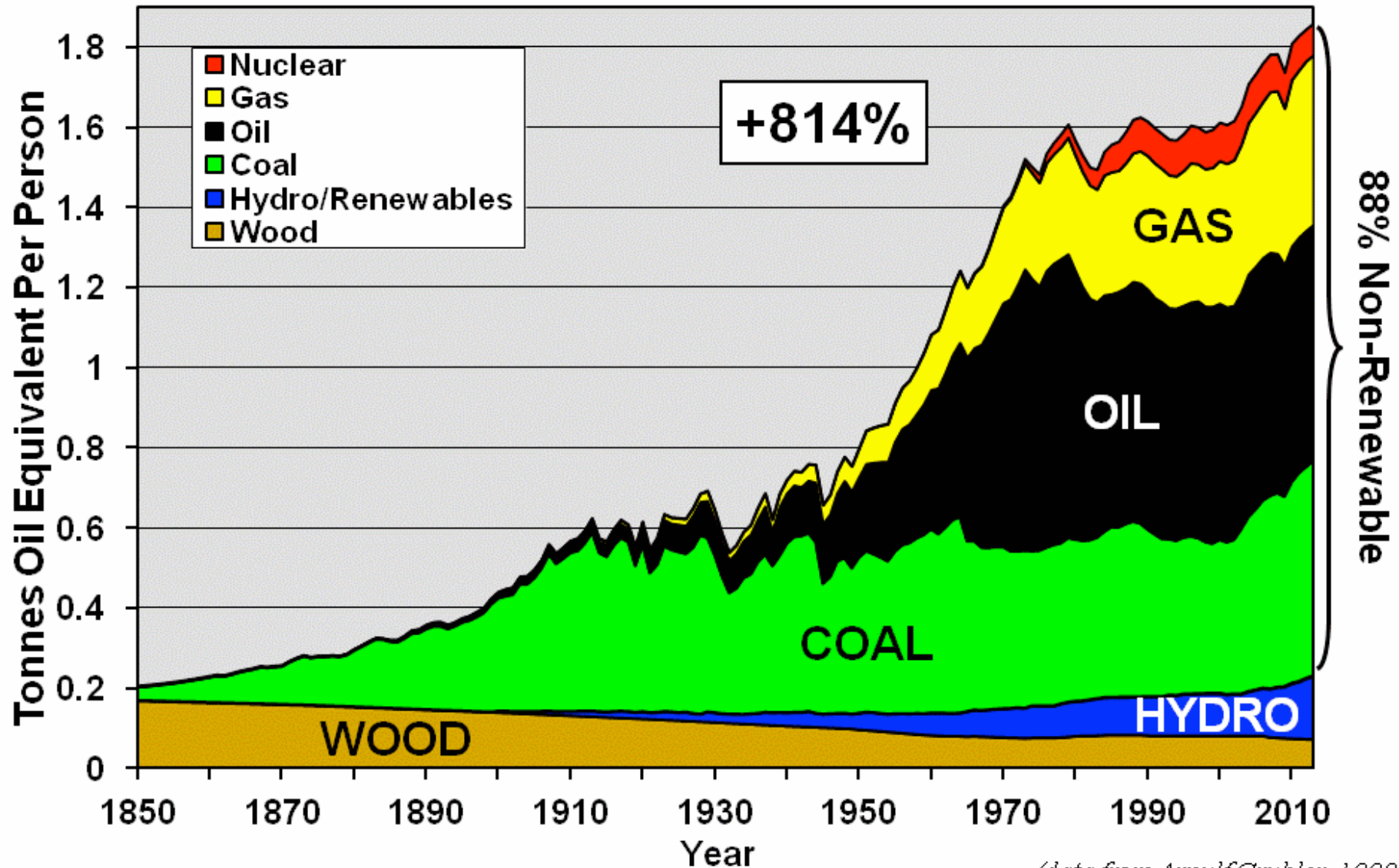
Since you loaded this page, fossil fuel companies have extracted:

- 5,216,790** barrels of oil
- enough to fill 331.8 Olympic swimming pools
- 1,300,919** tonnes of coal
- the weight of 6,847 blue whales
- 555,185,383** cubic meters of gas
- enough to fill Sydney Opera House 21,030 times

Keep it in the ground



World Per Capita Annual Primary Energy Consumption by Fuel 1850-2013





La rana si adegua al tepore della temperatura ambiente, e man mano che l'acqua sale gradualmente di temperatura... non si accorge che in realtà sta morendo!





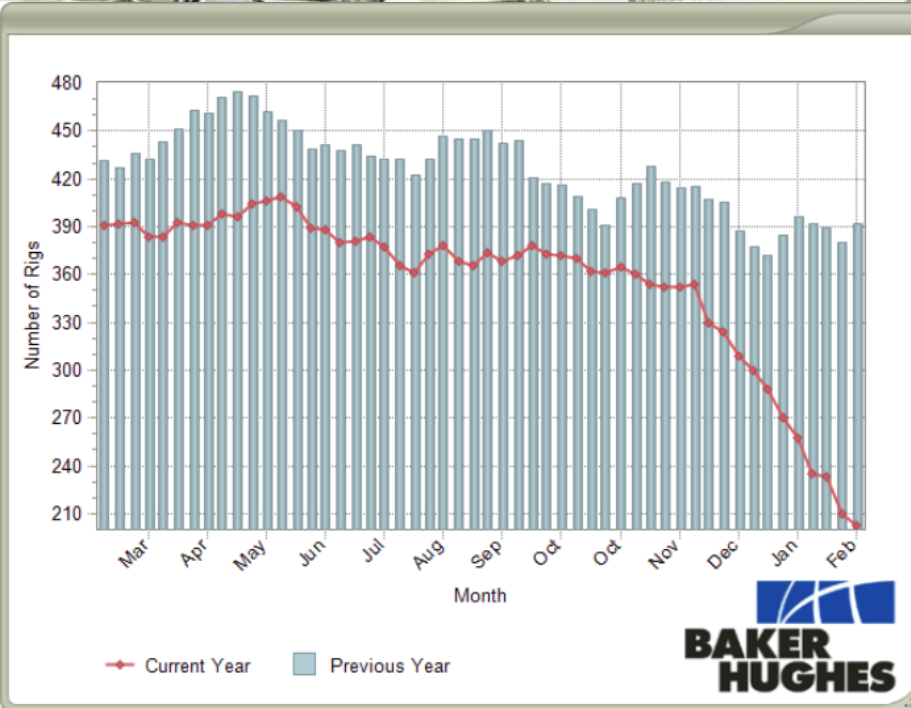
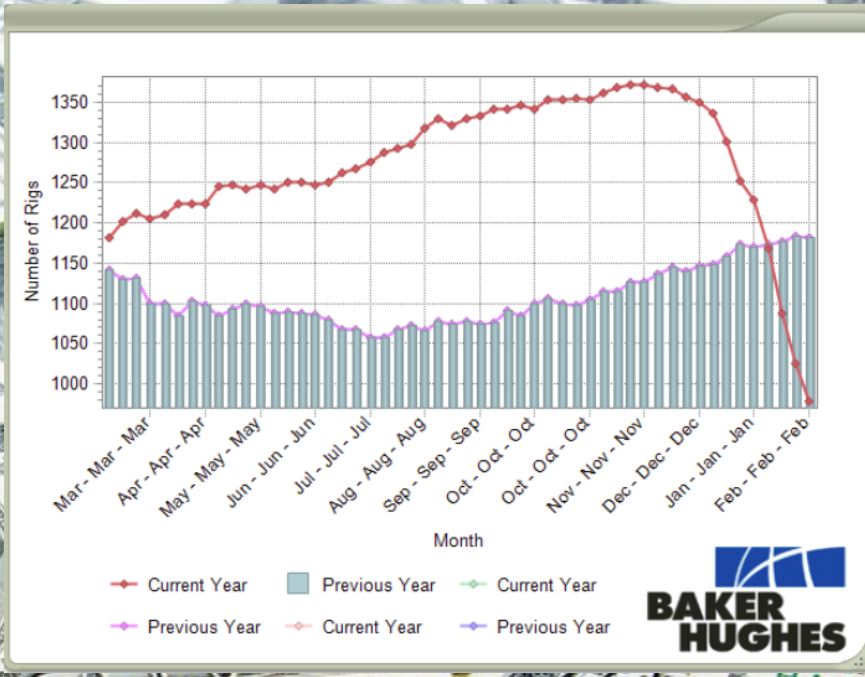
Boreal forest trees clear felled to make way for a new tar sands mine north of Fort McMurray, Alberta, 6 August 2012.

Photograph: Ashley Cooper/Alamy





CBJ15 - Crude Oil Brent (ICE)



THE CADILLAC
OF ESCALADES



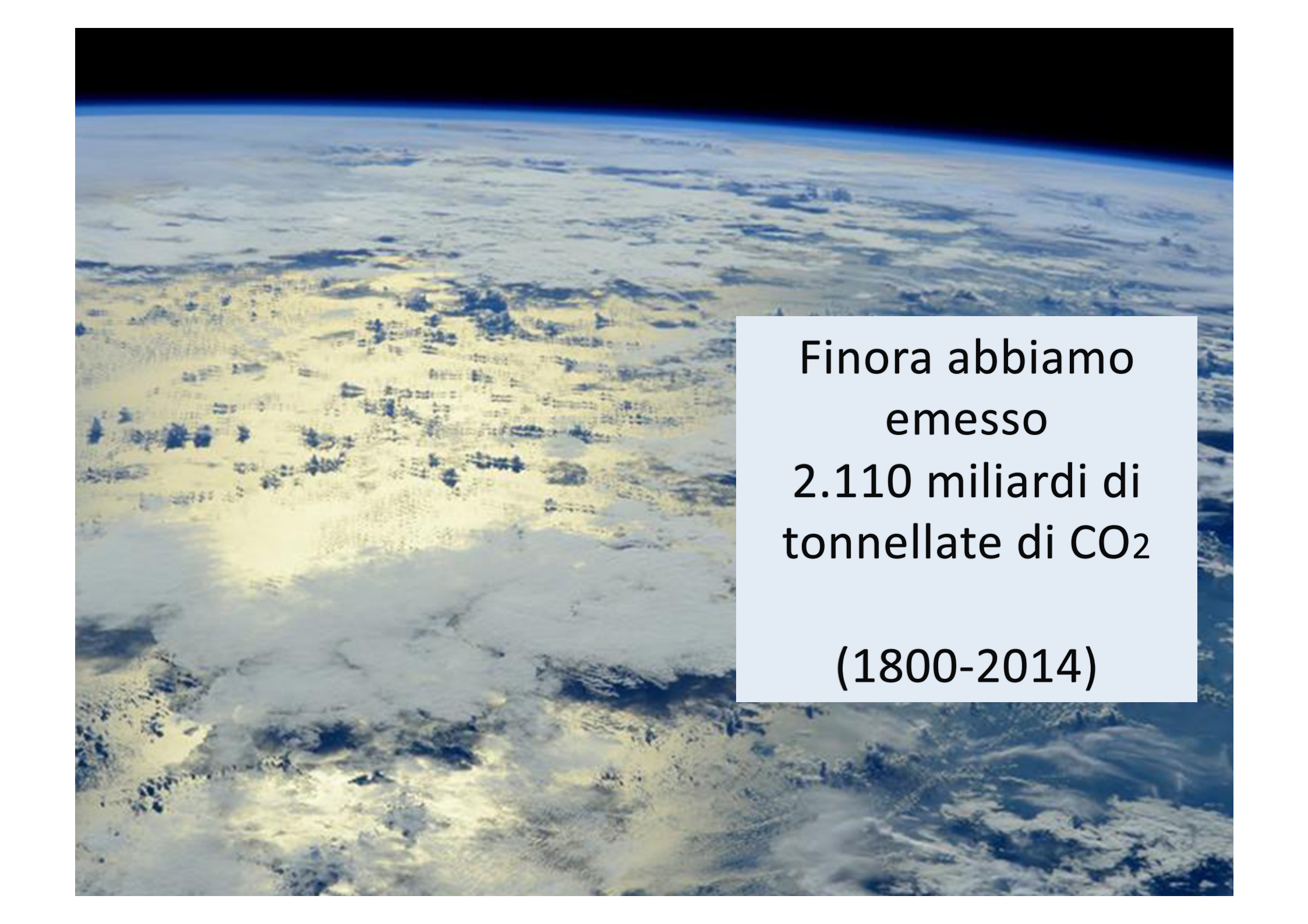
Il riaccesso amore per i mega SUV – 17 litri per 100km

BETTER DOESN'T ALWAYS
MEAN BIGGER.

The 6.2L V8 engine, paired with a smooth-shifting 8-speed transmission, is the beast inside the beauty. When it's power you want, it's power you get with 460 lb.-ft. of torque and a best-in-class 420 hp. And with advanced technology like Variable Valve Timing, direct injection and Active Fuel Management, our commanding power plant also achieves impressive fuel economy for a large luxury SUV.







Finora abbiamo
emesso
2.110 miliardi di
tonnellate di CO₂

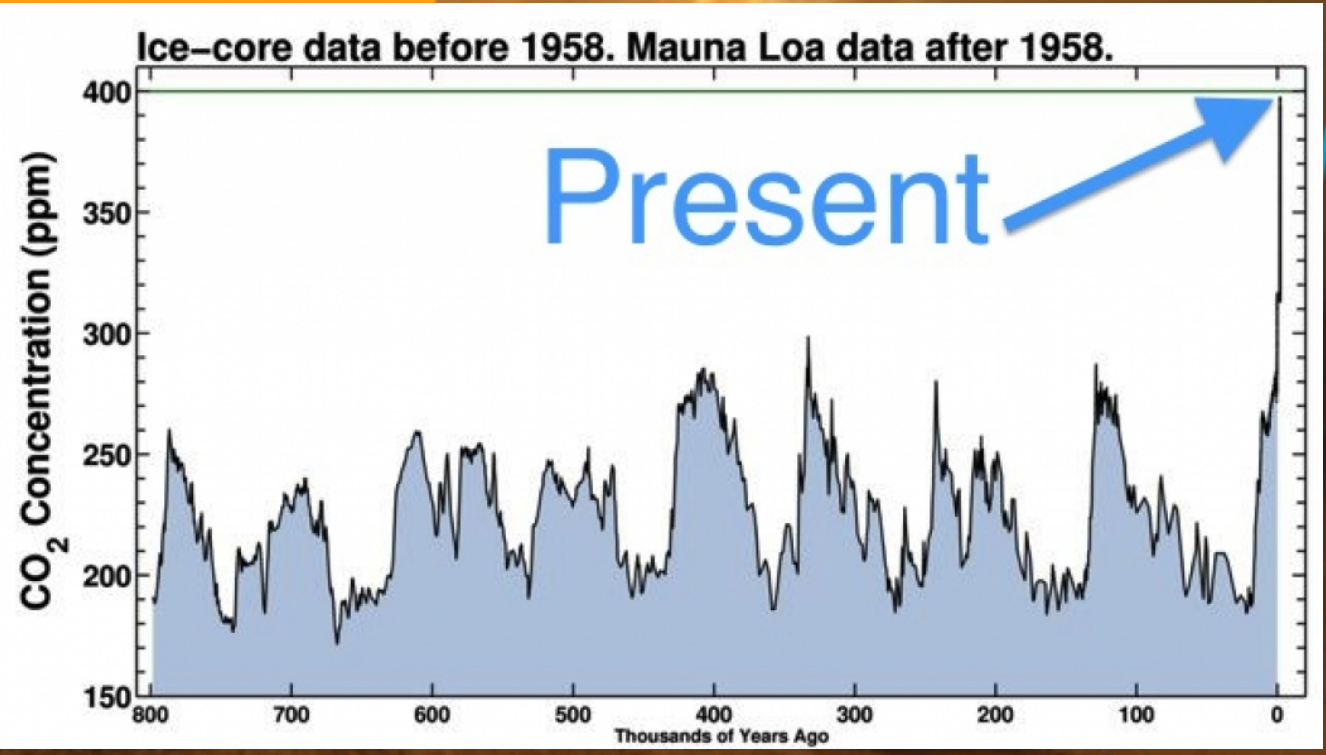
(1800-2014)

IT'S OFFICIAL:

2014

HOT
YEAR

GLOBAL TEMPERATURES
WE ARE HERE





WORLD CLIMATE SUMMIT

PARIS, FRANCE, 2015

PARIS CLIMAT 2015

Globally



52% of natural gas reserves

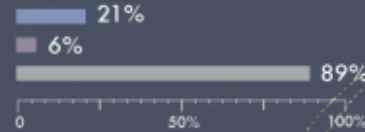


35% of oil reserves

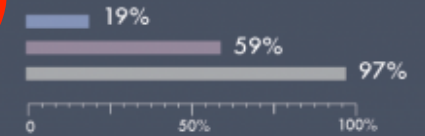


88% of coal reserves

Europe

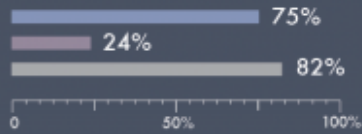


Former Soviet Union countries

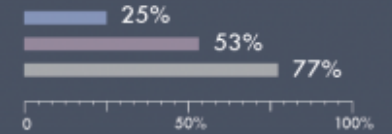


How much oil, gas and coal will we have to leave in the ground to stay under 2 degrees of warming?

Canada



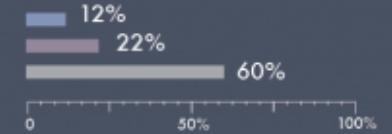
China and India



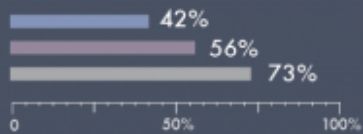
US



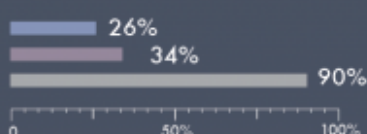
Other developing Asian countries



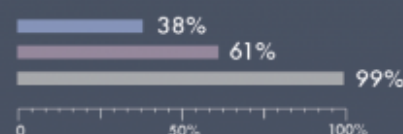
Central and South America



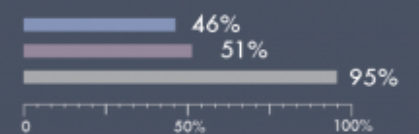
Africa



Middle East



OECD Pacific





Due grandi obiettivi

**Energia
primaria**

2000 Watt di potenza
continua pro capite

CO₂

1 tonnellata di CO₂
equivalente
pro capite



Efficienza

meno energia per lo
stesso scopo

Sobrietà

vettori energetici
rinnovabili anziché
non rinnovabili

Sostituzione

la quantità giusta –
per una migliore
qualità della vita

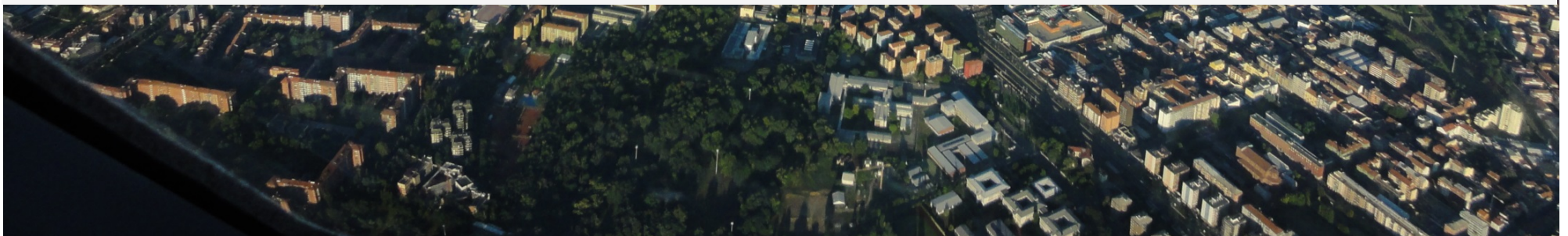


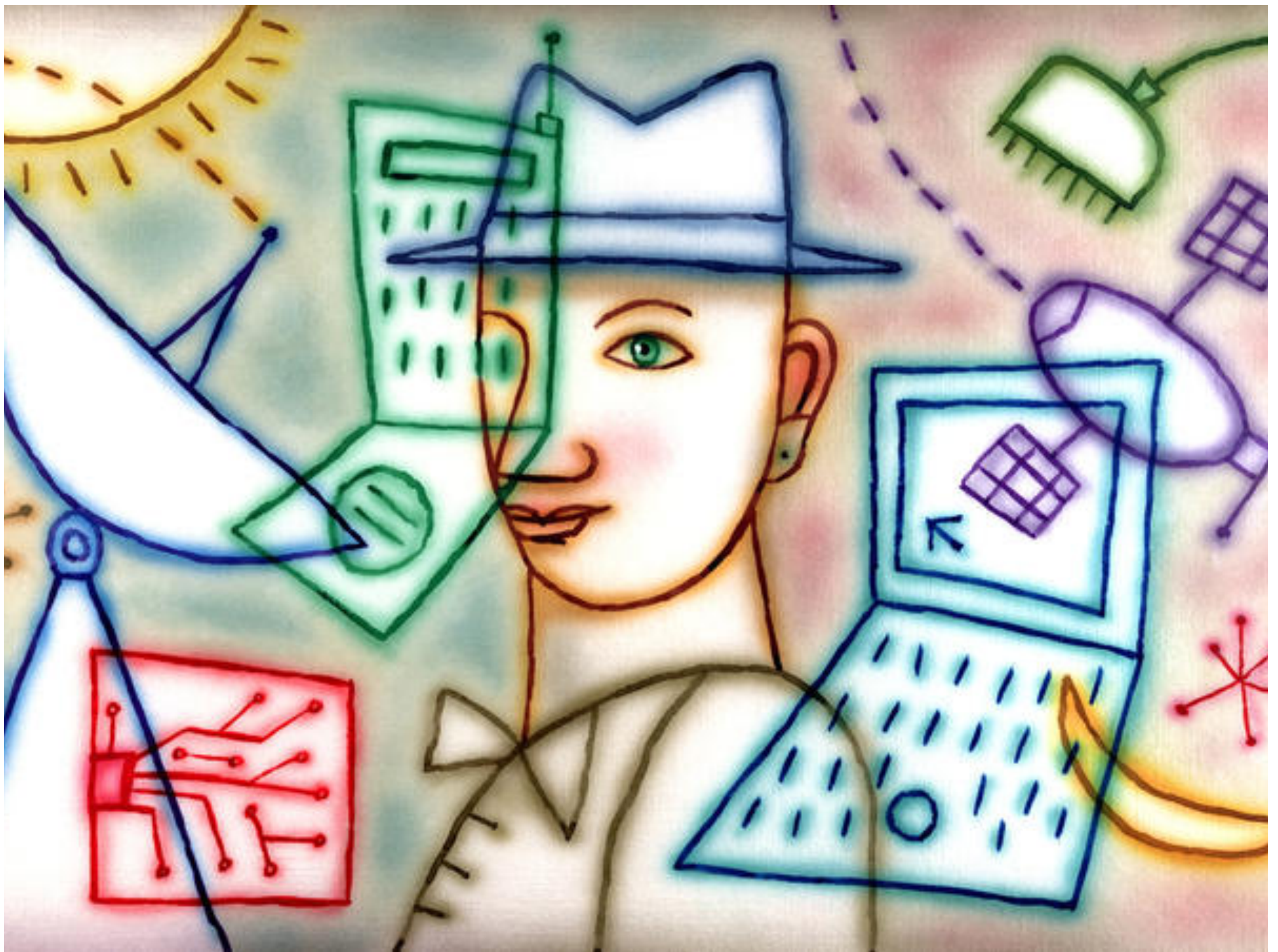
«2000 Watt»
sta per
entusiasmo,
qualità della vita,
responsabilità,
equilibrio e
sostenibilità

sta per l'impegno
per un futuro
energetico
sostenibile



L'unico **watt** sostenibile è il **negawatt**








NORBERT LANTSCHNER

Smile Energy

Il coraggio di cambiare per un futuro con futuro



RAETIA

sostenibilità • economia • qualità di vita

...abbandonare l'attuale linea di collisione



Grazie

Un giorno scoppiò nella foresta un incendio devastante e tutti gli animali fuggirono.

A un tratto il leone vide che volava un piccolo colibrì proprio in direzione dell'incendio. Allora, preoccupato, tentò di fermare l'uccellino per fargli cambiare direzione, ma il colibrì rispose che stava andando a spegnere l'incendio.

Il leone, meravigliato, replicò che era impossibile spegnere l'incendio con la goccia d'acqua che portava nel becco.

Allora il colibrì, sempre più deciso, parafrasò al re della foresta:

«io faccio la mia parte, e questo crea la differenza».



VW XL1





Felicita